

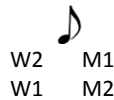


The Lady Pheasant

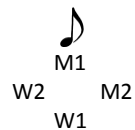
Formation: Longways, duple minor

Dance: Nikki Herbst (2015); Music: "Grim's Ditch" by Steve Hunt (2009)

- A1 1-4 1s cast down to face each other in 2nd place in a line of 4 across, 1s setting to partner at end of phrase, *while* 2s set to partner at beginning of phrase and then cast onto the ends of the line, facing in.
- 5-8 1s pass R., then 1s & 2s pass L., 1s then looping L. into 2nd diagonal positions (man up, woman down) and turning L. to face up (W1) or down (M1) along the line *while* 2s pass R. and continue into 1st diagonal positions (woman up, man down), staying facing up (W2) or down (M2).



- A2 1-4 With 2s in the lead moving along the lines, dance up (women) or down (men) a double. All cast L. (away from set) to form a diamond with 2s on the outside facing in, 1s along the center line facing up (W1) or down (M1).



- 5-8 Hands in diamond, set to R. & L., then all cast R. one position, turning over R. shoulder ("Petronella turn").
- B 1-4 1s turn single to face each other in the center of a line of 4 across, setting to partner at end of phrase, *while* 2s move to the ends of the line, facing in, M2 casting over L. shoulder to end behind M1, W2 moving between the 1s and casting R. around W1.
- 5-8 Using 2 steps per change, middles only R.H. turn halfway to face ends, middles & ends L.H. turn halfway, middles only R.H. turn halfway, middles & ends L.H. turn halfway. All face up (W2 & M1 do a quick flip at end of the L.H. turn).
- 9-16 Lines go forward a double. With 1s moving forward, gate into progressed places and all cross with partner, turning R. to face in.

The following at half note = 76 rather than 108

Grim's Ditch

$\text{♩} = 108$

Steve Hunt - July 2009

G C D7 G Am D7 G
C D G Am D7 G
D A D Em E7 A D G
Em A D A7 D G C Am G A7
D D7 G C D G Am D7 G

A prehistoric linear earthwork that runs from near Rockbourne to Martin Down in Hampshire - some 3 miles